



TRASSIR Pose Detector

Neuroanalytical intelligent module
for detecting and classifying human poses

Detecting non-typical human behaviour in a video stream to ensure
security and swift response to emergencies



TRASSIR Pose Detector

A neuroanalytical detector based on human movement algorithms determines and classifies a person's pose in a video stream in order to track and swiftly respond to non-typical behaviour.

The module automatically detects a person and determines the body position based on the average position of the person's body parts in the last two seconds.



Pose Detector usage scenarios



Improving quality of service:

- detecting incidents involving patients at medical centres
- searching for events to resolve disputes



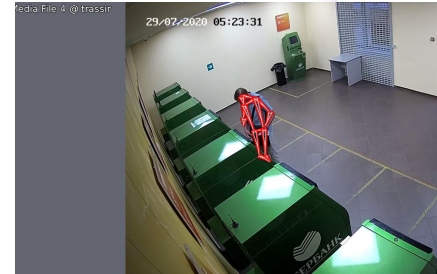
Ensuring security at complex industrial sites:

- detecting violations
- speeding up emergency response
- adding to the database of non-typical poses according to specific requirements



Mitigating reputational risks:

- identifying unwanted visitors and inappropriate behaviour



Ensuring security:

- swift detection of suspicious behaviour of intruders
- preventing terrorist acts
- public order
- transport safety
- assisting law enforcement

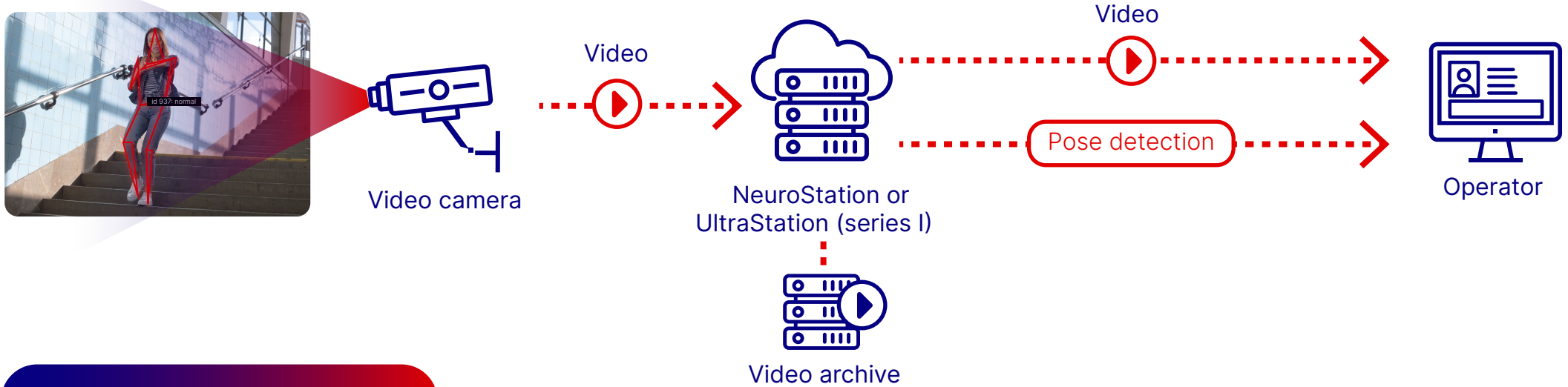


Preventing fraud:

- preventing theft
- video archive analysis



Solution architecture. How does it work?



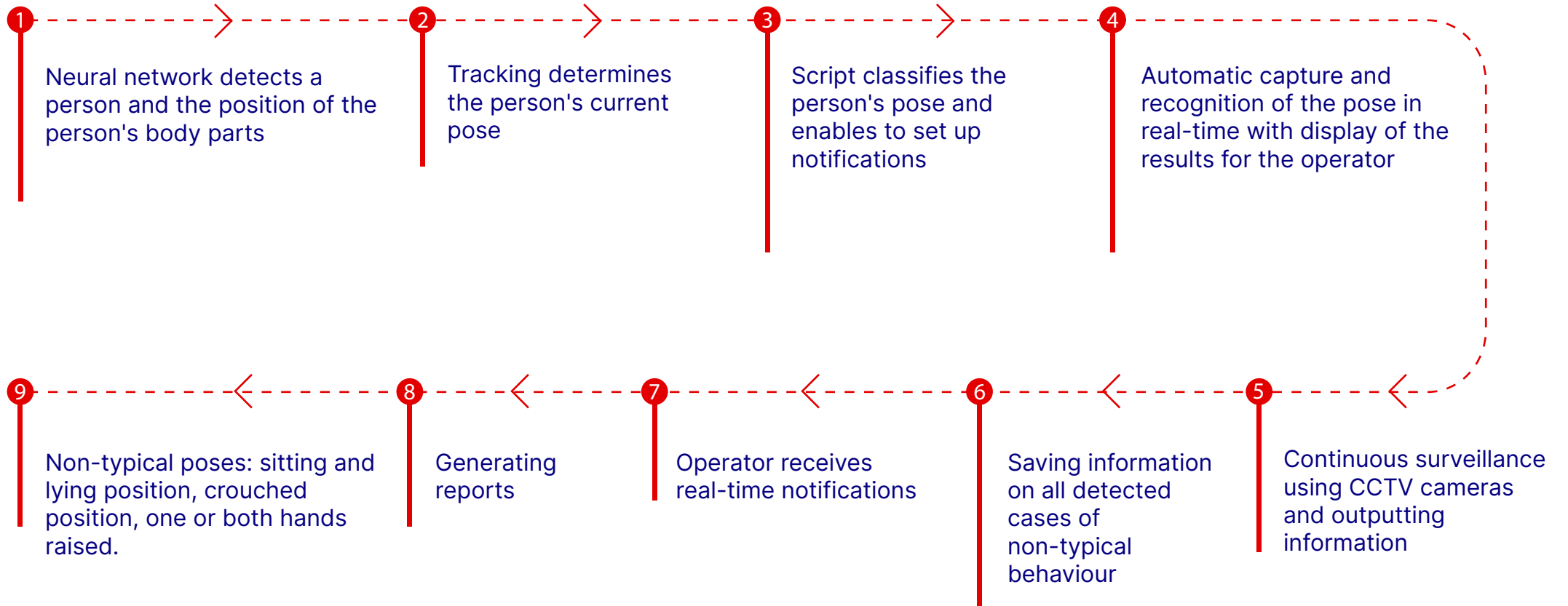
Reaction scenarios:

1 Notifications in Trassir interface

2 Notification:
SMS – alerts
Email – alerts
Telegram – alerts

3 Integration with on-site systems:
Access control system (turnstiles, doors, etc.)
Voice notification system
Alarm system

Solution functionality. How does it work?



Areas of application



Medical sector



Public areas



Retail



Banking sector



Business centres
and offices



Industrial
enterprises



Cultural and
sports facilities

Solution advantages

Intelligent algorithms

– high percentage of correct recognition in a live video stream or from photos. Adaptation to different frame exposure conditions and changes in the physical characteristics of a person's face

Flexibility

- working in simple and advanced modes. In the latter, the detector recognizes more subtle poses using a high-resolution network (more capacity required). Minimising false alarms using hardware methods

Modification

– capacity to expand functionality and create customised solutions

Offload analytics

– capacity to gradually build up the intelligent functionality of the solution and merging with existing modules

Integration

– the necessary set of mechanisms for integration with hardware

Contacts

 www.trassir.com

 +44 208 187 6001

 info@trassir.com



Hardware Catalog



Video Management
Software Catalog



Success Cases