



TRASSIR[®]

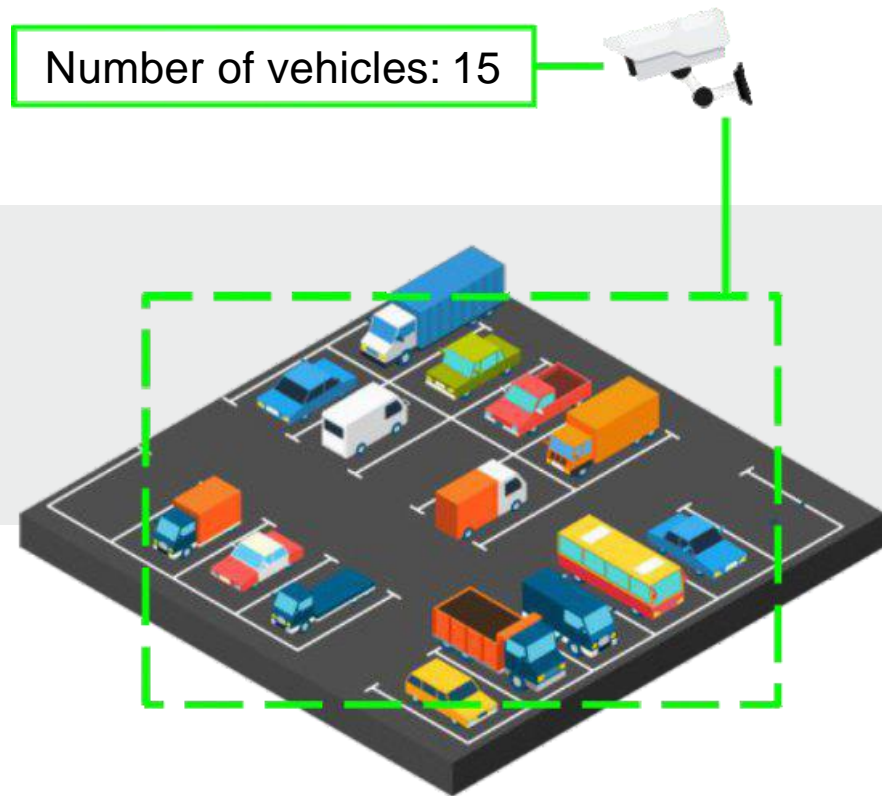
TRASSIR Parking

monitoring the number of vehicles
in the parking area

TRASSIR Parking

Description

TRASSIR Parking is a script-module for monitoring the number of vehicles and time of their stay in the parking area.



TRASSIR Parking

Description

The **TRASSIR Parking** operation calls for at least two AutoTRASSIR-30 license plate recognition modules (LPR) (available separately).

When operated in close link with **TRASSIR Parking**, these modules record the moments the vehicle is caught on video cameras.

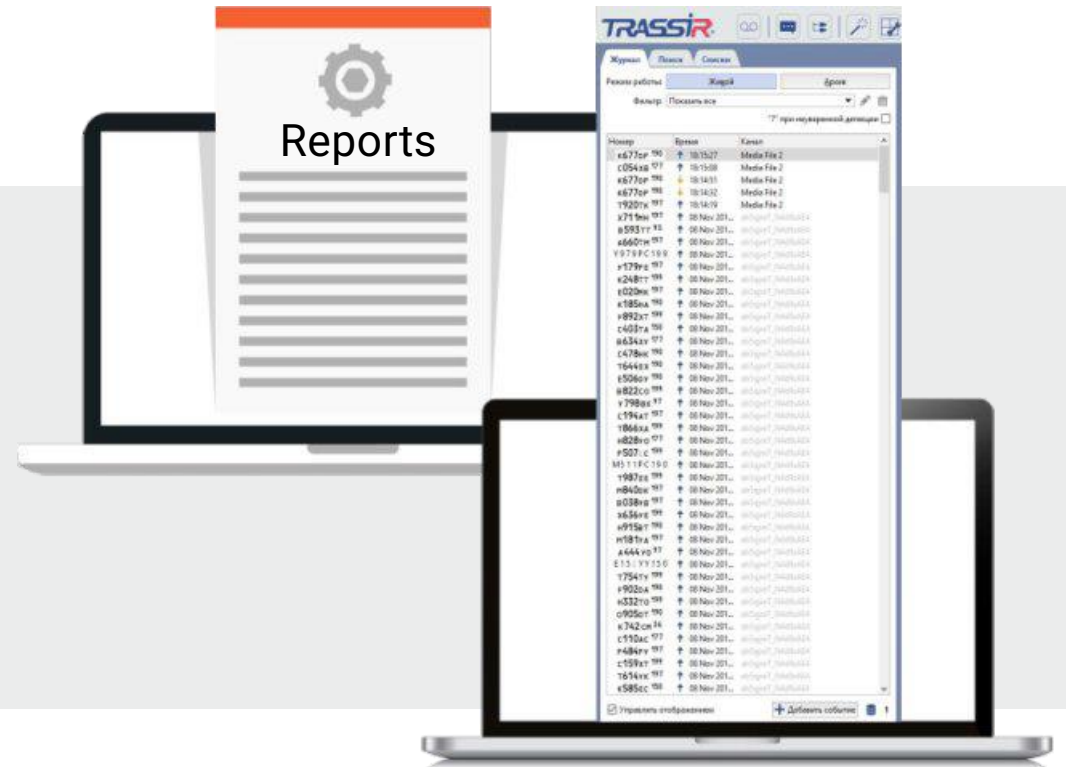


TRASSIR Parking

Description

Based on the received data **TRASSIR Parking** generates a list of vehicles with the exact time and date of entry/exit of the vehicle.

The generated reports are supported by screenshots taken at the moment the vehicle crossed control points.



TRASSIR Parking

For the owners of office buildings and shopping centers

Using the **TRASSIR Parking** module allows owners of office buildings and shopping centers:

- to have a clear picture for presenting parking bills to car owners
- to know the number of vehicles in the parking area

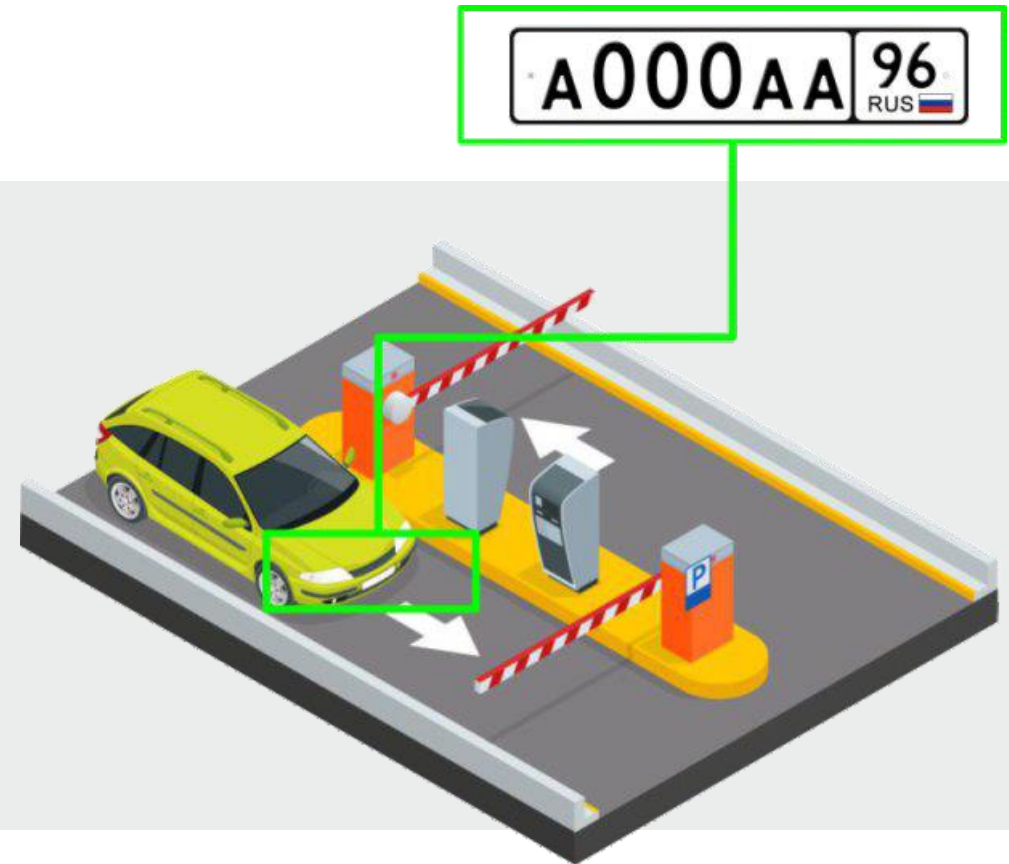


TRASSIR Parking

To the head of security

The use of the **TRASSIR Parking** module in conjunction with **AutoTRASSIR** and **ACS** allows the security head of the car fleet, warehouse and customs terminals, parking areas, private estates and other facilities:

- to provide automatic recording of all vehicles passing through the entrance/exit gates



TRASSIR Parking

To the head of security

The use of the **TRASSIR Parking** module in conjunction with **AutoTRASSIR** and **ACS** allows the security head of the car fleet, warehouse and customs terminals, parking areas, private estates and other facilities:

- to optimize the operation of the pass entry system and monitor the time of loading/unloading of goods

Unloading
Start time: 8:35

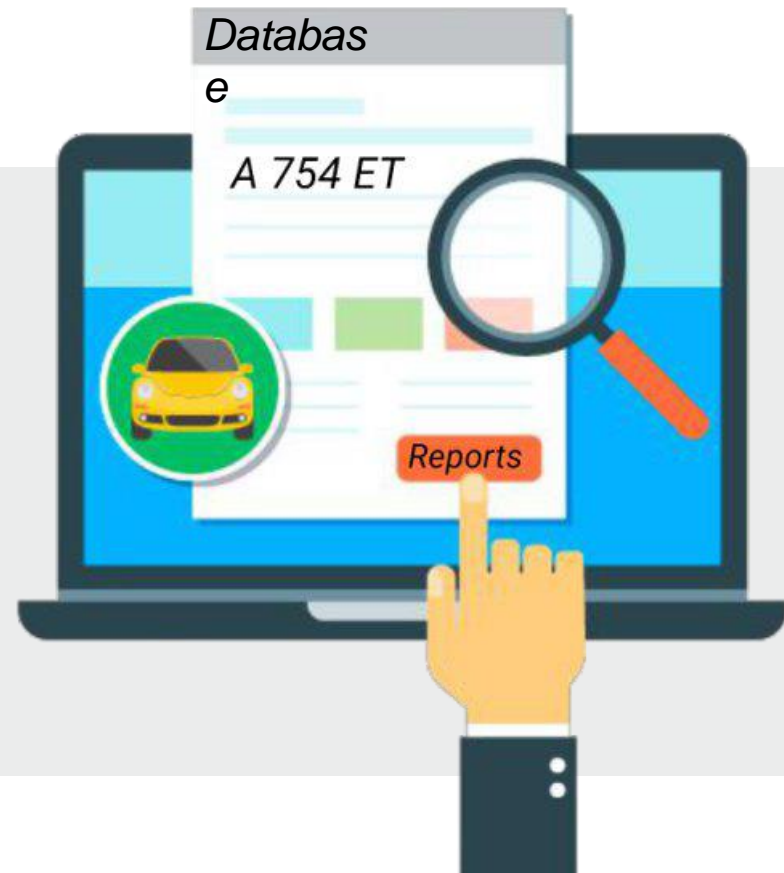


TRASSIR Parking

To the head of security

The use of the **TRASSIR Parking** module in conjunction with **AutoTRASSIR** and **ACS** allows the security head of the car fleet, warehouse and customs terminals, parking areas, private estates and other facilities:

- to keep records and a database of vehicles located inside the territory

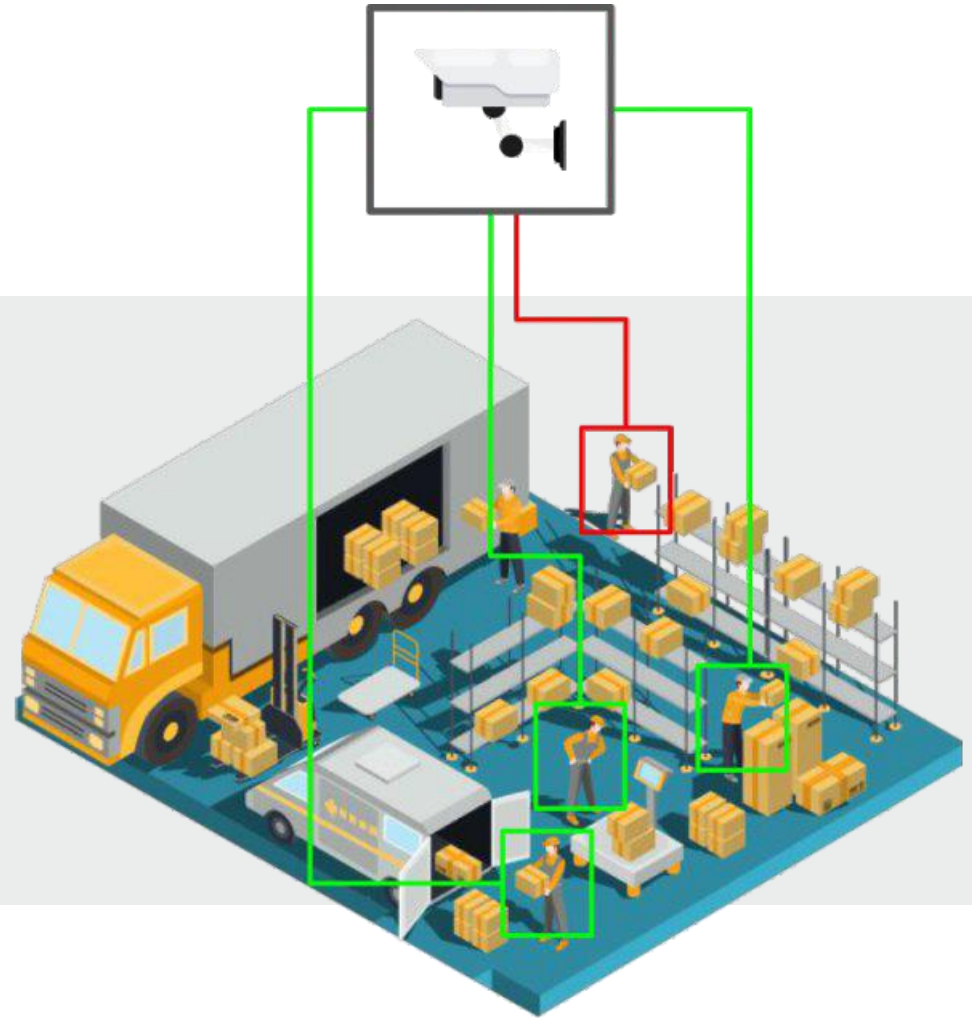


TRASSIR Parking

To the head of security

The use of the **TRASSIR Parking** module in conjunction with **AutoTRASSIR** and **ACS** allows the security head of the car fleet, warehouse and customs terminals, parking areas, private estates and other facilities:

- to reduce materially the incidence of theft

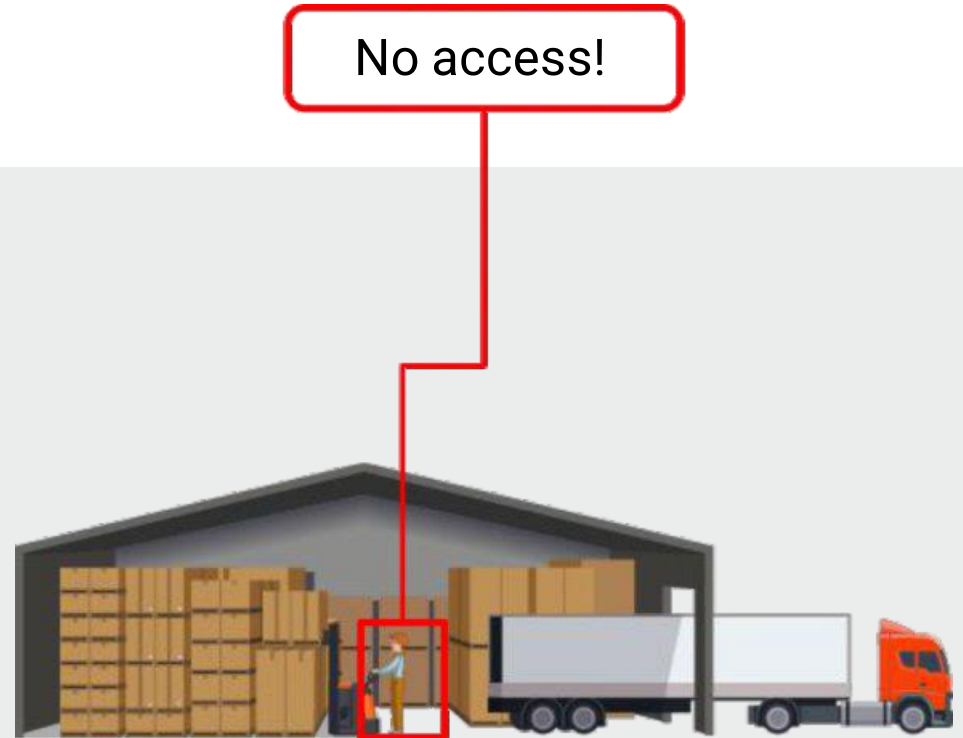


TRASSIR Parking

To the head of security

The use of the **TRASSIR Parking** module in conjunction with **AutoTRASSIR** and **ACS** allows the security head of the car fleet, warehouse and customs terminals, parking areas, private estates and other facilities:

- to deny access of unwanted visitors to the protected area





Contacts

 trassir.com

 welcome@tglobal.ae

Hardware catalog



VMS Catalogue



Success stories

